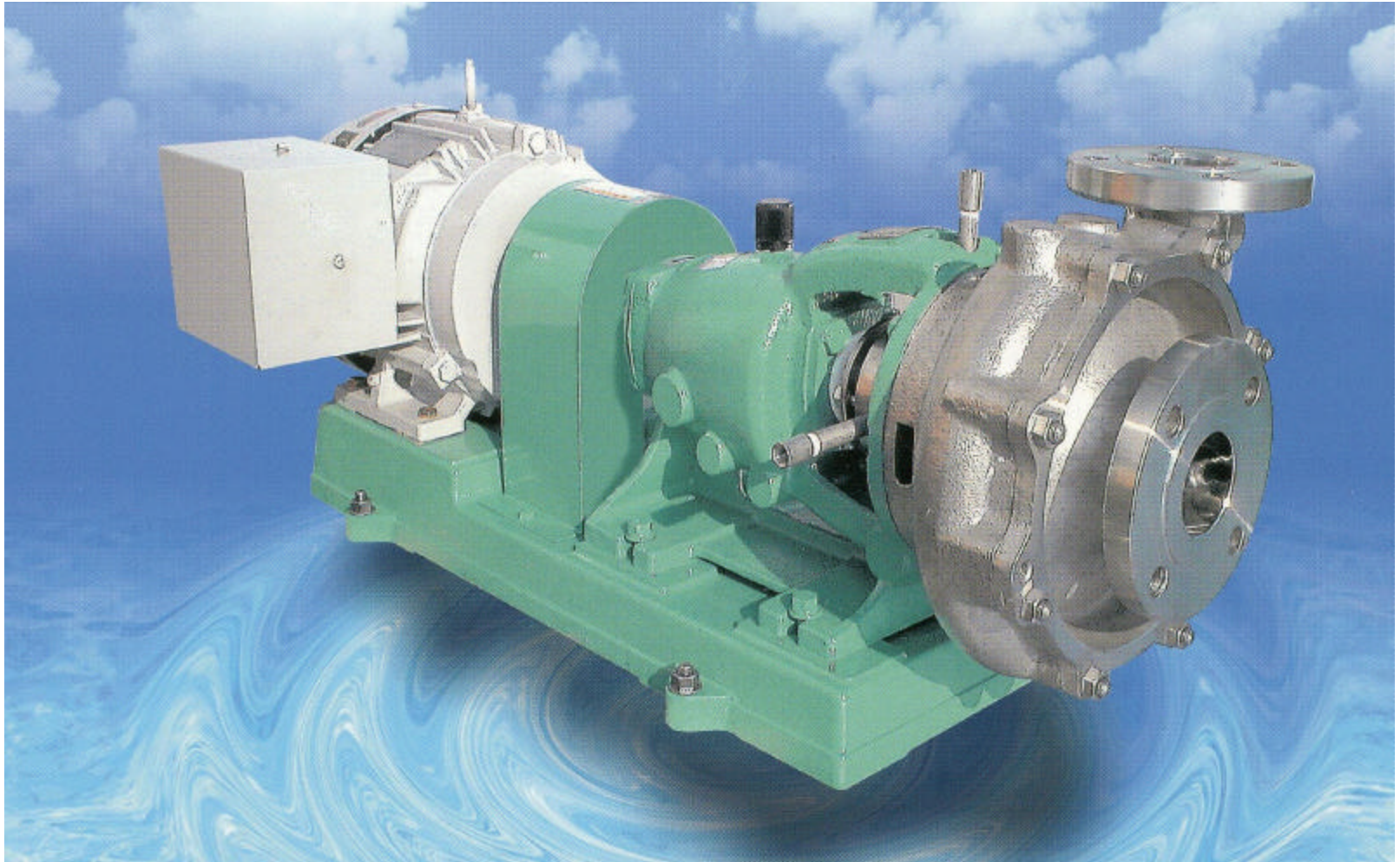


Honda Kiko Latex Pump (BLS)



Type BLS Latex Emulsion Pump

! Unique Features !

- 1. Full Open Impeller**
- 2. Mirror Finish on Surface**
- 3. Special Mechanical Seal**

Best Solution to LATEX

LATEX is...

- ✓ Solidifying when shearing force is applied
- ✓ Sticky (Gluey Touch)

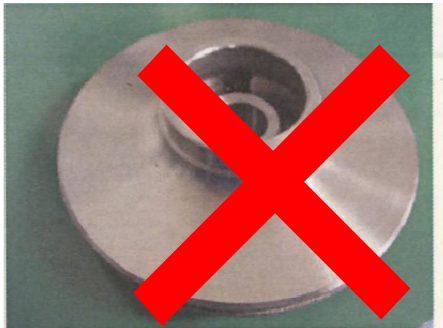
Influence on Pump...

- ✓ Fluid changes to Coagulate by Force of Impeller
- ✓ Coagulate grows to Clogging

Require to open the case to remove the clogging very often!

1. Full Open Impeller

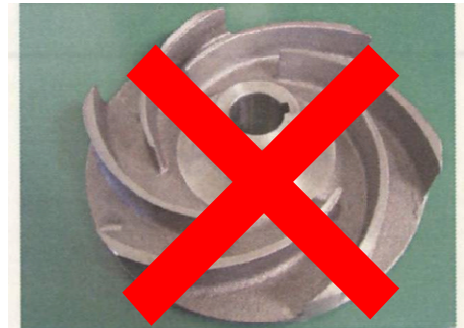
No Back Shroud Impeller to minimize shearing force



CLOSED TYPE



FULL OPEN TYPE



SEMI OPEN TYPE

2. Mirror Finish on Surface

Casing / Impeller surfaces are smoothly contacting fluid



Polishing Class#400, Buffing



2. Mirror Finish on Surface



Case & Impeller

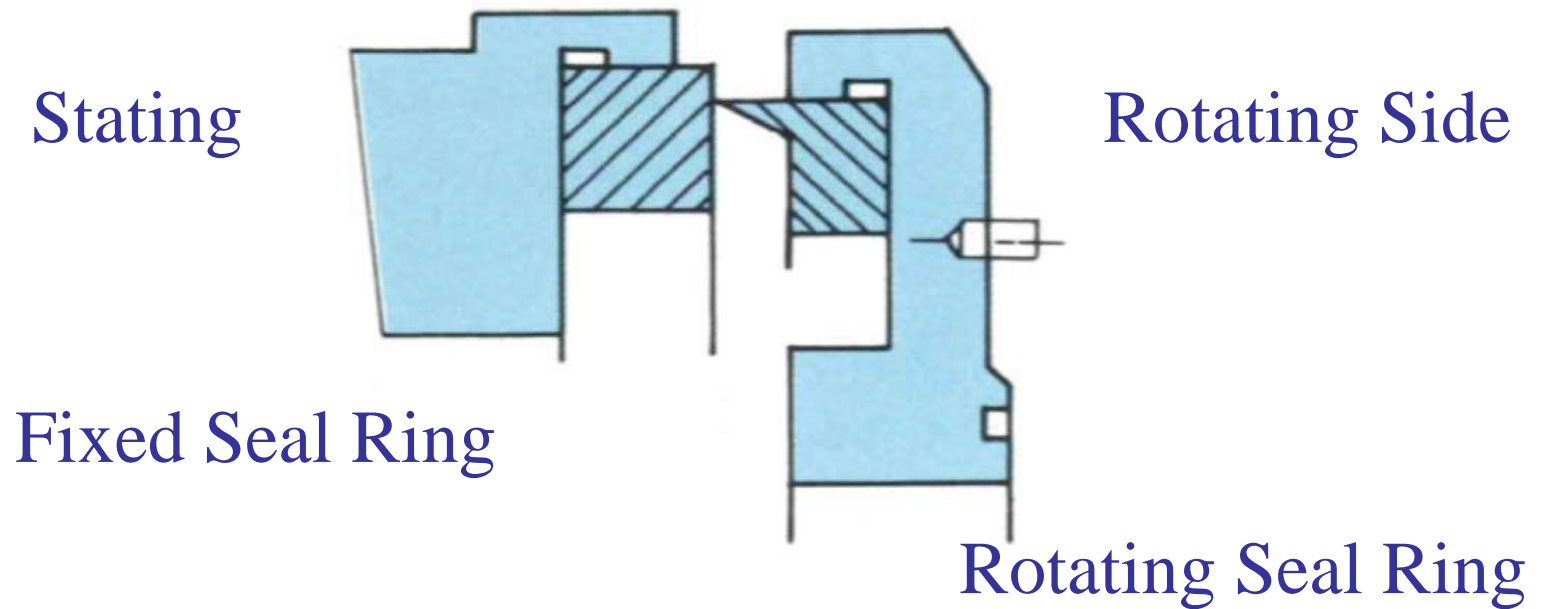


Back Cover



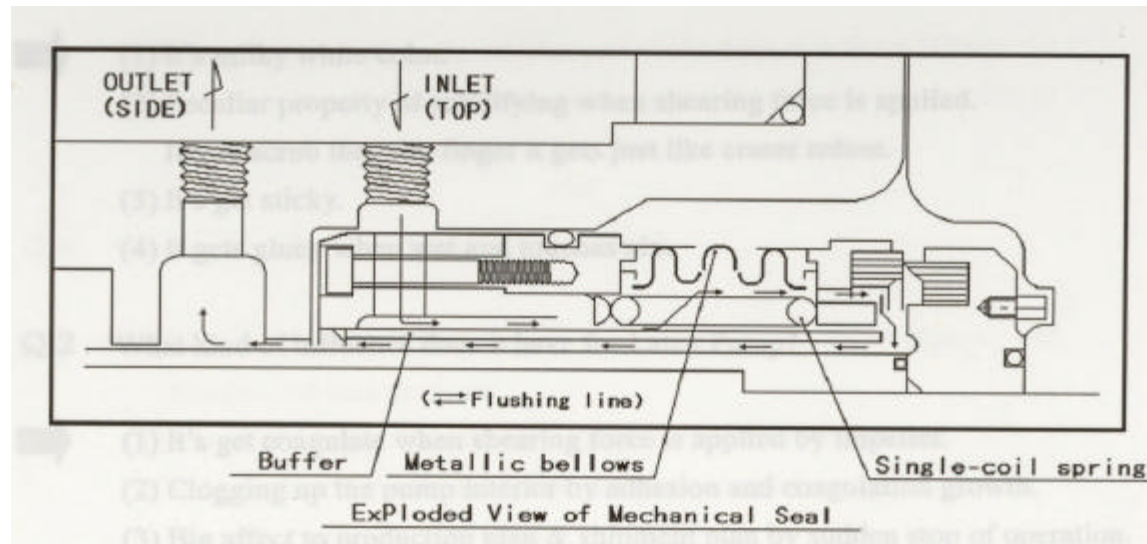
3. Special Mechanical Seal

“Knife Edge” Sealing to cut & remove Coagulum!!

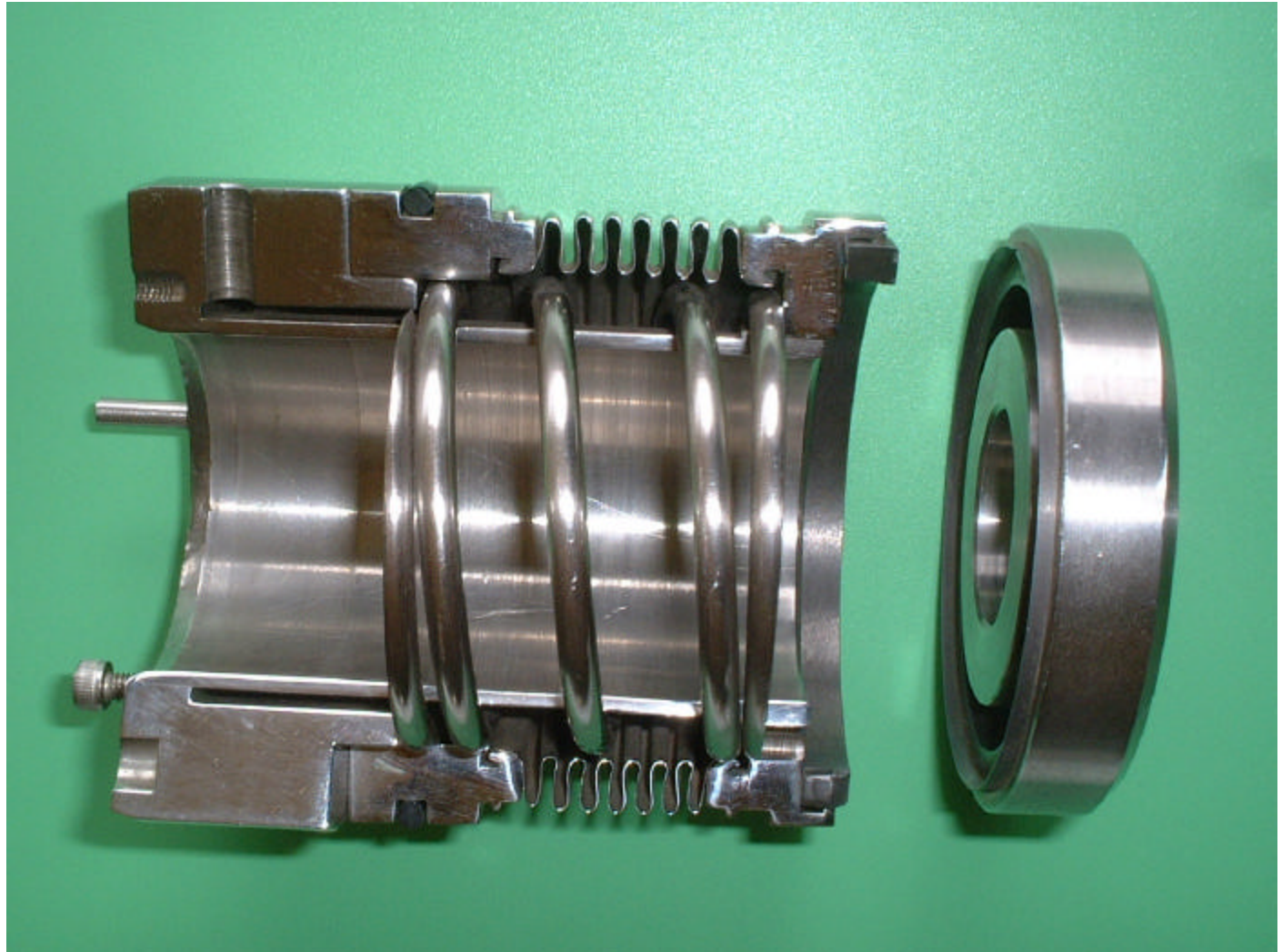


3. Special Mechanical Seal

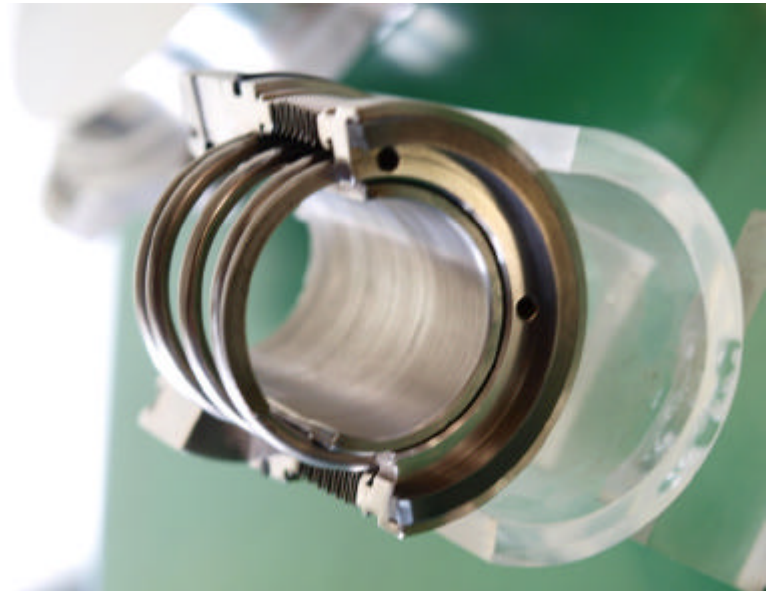
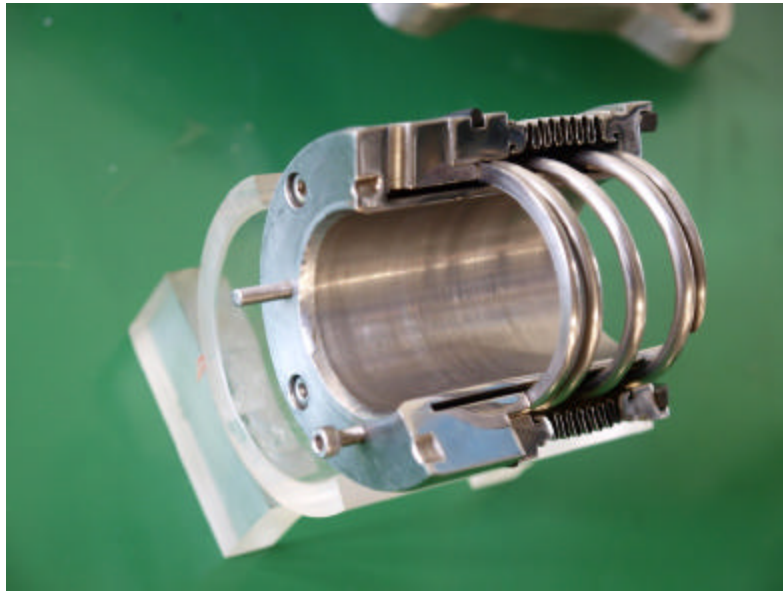
- ✓ Spring is covered by Metallic Bellows to avoid contact to Latex keeping flexibility all the time.
- ✓ Balance type / Tungsten Carbide + Tungsten Carbide.
- ✓ Top Inlet / Side Outlet Type External Flushing.



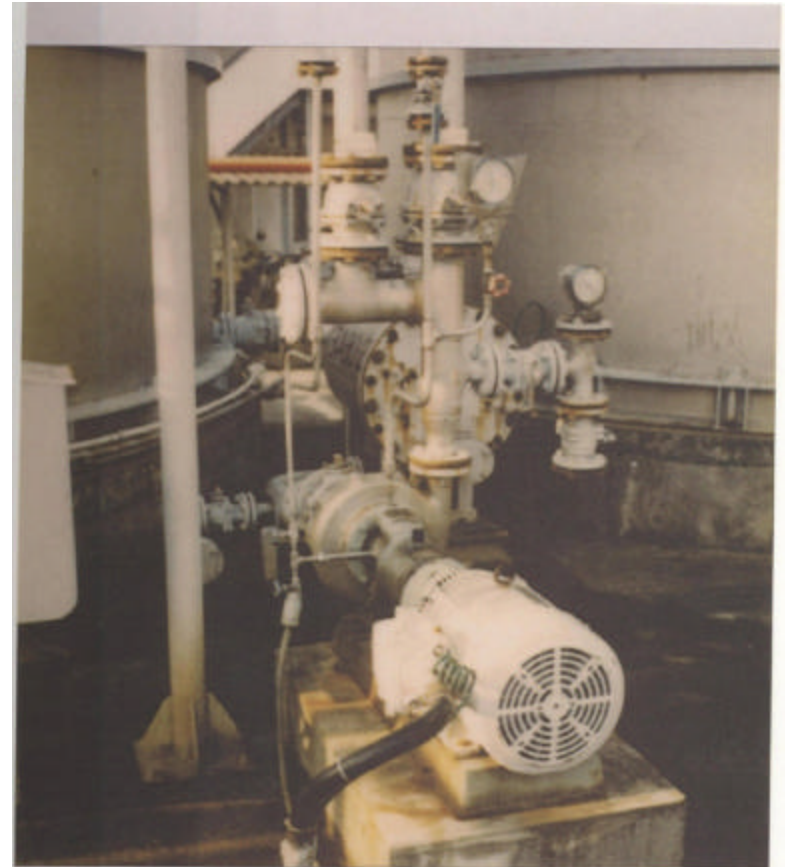
3. Special Mechanical Seal



3. Special Mechanical Seal

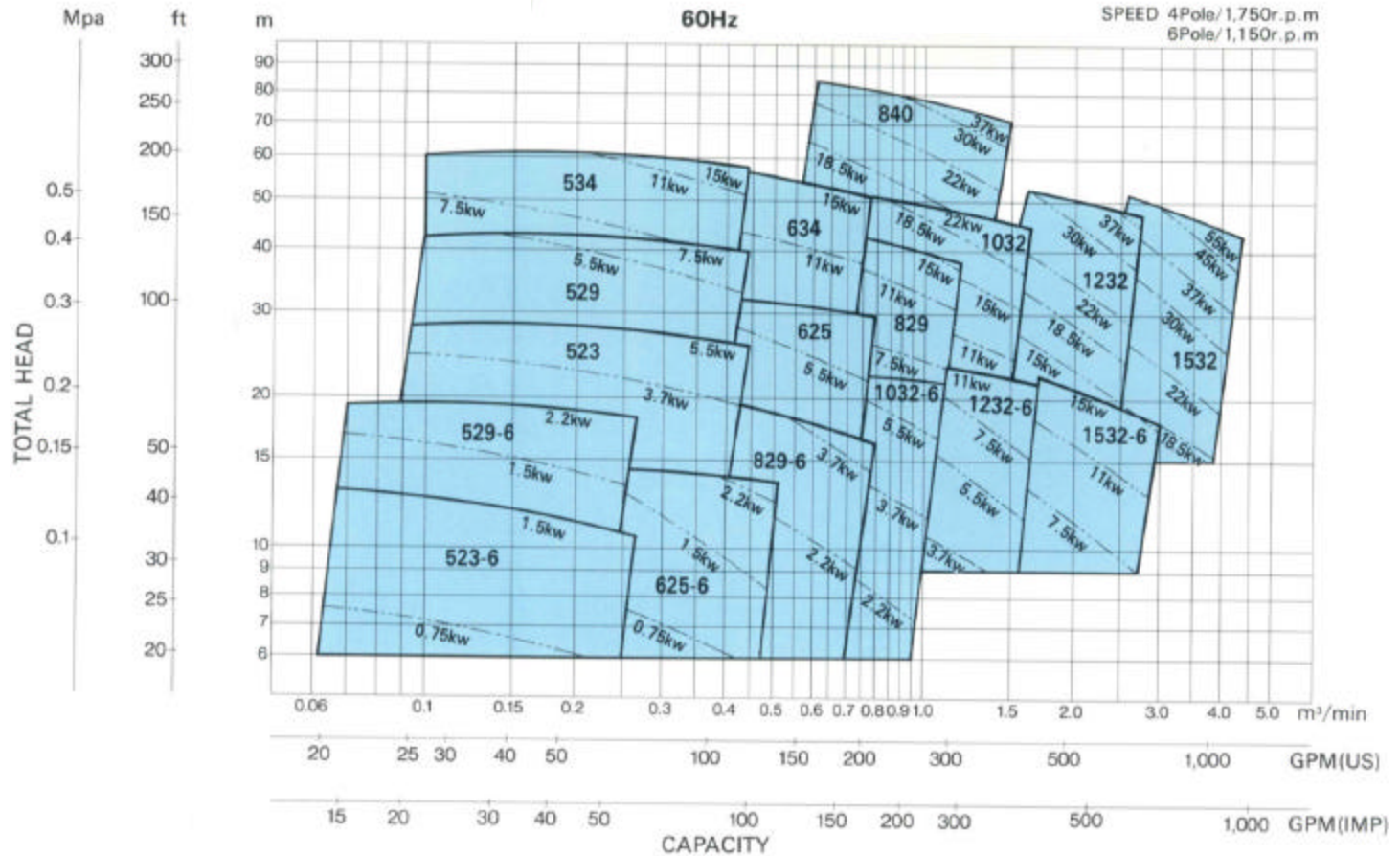


Latex Process Can Be Improved Drastically!!



60Hz Speed Slection Chart

PERFORMANCE CHARTS



Type BLS Latex Emulsion Pump

Reference Lists

Petrochemical Application

ASAHI CHEMICAL INDUSTRY CO., LTD.

SANKYO CHEMICAL INDUSTRIES, LTD.

SHIN-ETSU CHEMICAL CO., LTD.

KUREHA CHEMICAL INDUSTRY CO., LTD.

SHOWA DDE MANUFACTURING K.K.

KOKURA SYNTHETIC INDUSTRIES, LTD.

AIR WATER INC.

IDEMITSU PETROCHEMICAL CO., LTD.

DAINIPPON INK AND CHEMICALS, INC.

KANEKA CORPORATION

KOEI CHEMICAL COMPANY, LIMITED

KONOSHIMA CHEMICALS, INC.

SAKAI CHEMICAL INDUSTRY CO., LTD.

LUCKY., LTD.

CHANG CHUN PETROCHEMICAL CO., LTD.

FATTY CHEMICAL (S) SDN, BHD.

CHUGOKUKAYAKU CO., LTD.

SUMITOMO DOW LIMITED

Type BLS Latex Emulsion Pump

Reference List

Petrochemical Application

SANKYO KASEI CO., LTD.

DAIKIN INDUSTRIES., LTD.

SHOWA DENKO K.K.

CHISSO PETROCHEMICAL CORPORATION

CATALYSTS & CHEMICALS IND CO., LTD.

TOA GOSEI CO., LTD.

SUMITOMO CHEMICAL CO., LTD.

NITTO KOGYO LTD.

SEKISUI CHEMICAL CO., LTD.

NIPPON ZEON CO., LTD.

UBE INDUSTRIES, LTD.

mitsubishi chemical company

ASIA SILICONES MONOMER LIMITED

MITSUBISHI RAYON CO., LTD.

MITSUI CHEMICALS, INC.

NISSAN CHEMICAL INDUSTRIES LTD.

DENKI KAGAKU KOGYO K.K.

DAICEL CHEMICAL INDUSTRIES LTD.

IWATA CHEMICAL CO., LTD.

DAI NIPPON PRINTING CO., LTD.

Type BLS Latex Emulsion Pump

Reference List

Latex, Rubber, Carbonblack Application

UBE CYCON LTD.

SUMITOMO RUBBER INDUSTRIES, LTD.

NIPPON A&L INC.

JSR CORPORATION

ASAHI CARBON CO., LTD.

SHIN NIPPON CARBON CO., LTD.

CABOT K.K.

NIPPON STEEL CHEMICAL CO., LTD.

AMERIPOL SYNPOL CORPORATION.

NANTEX INDUSTRY CO., LTD.

CHI MEI CORPORATION.

DENKA SEIKEN CO., LTD.

TOKAI CARBON CO., LTD.

NIPPON ZEON CO., LTD.

ASAHI CHEMICAL INDUSTRY CO., LTD.

BRIDGESTONE CORP.

mitsubishi RAYON CO., LTD.

MITSUI CHEMICALS, INC.

THE DOW CHEMICAL COMPANY

GOOD YEAR TIRE & RUBBER CO.

THAI PETRO CHEMICAL IND, CO., LTD.

BORG WARNER CHEMICALS INC.